



## VESAGE COURT, LEATHER LANE, LONDON, EC1N

£2,500 PER CALENDAR

\* VIRTUAL TOUR AVAILABLE \* PRIVATE BALCONY \* Goldman Greg are delighted to offer this one bedroom fifth floor apartment located within Vesage Court.

The apartment benefits from a large reception room with direct access onto a balcony, a separate kitchen, modern bathroom and a good size double bedroom. There's also a large storage cupboard accessed from the hallway.

Vesage Court is conveniently located within easy reach of both Holborn and Farringdon Stations as well as plenty of local shops, restaurants and amenities all within walking distance.

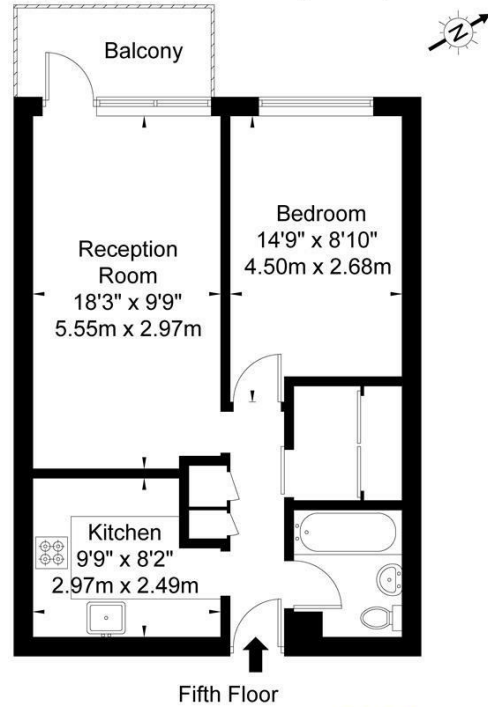
Available from the 23rd July 2026, early viewings are highly recommended.



Goldman Greg

# Vesage Court Leather Lane EC1N 7RE

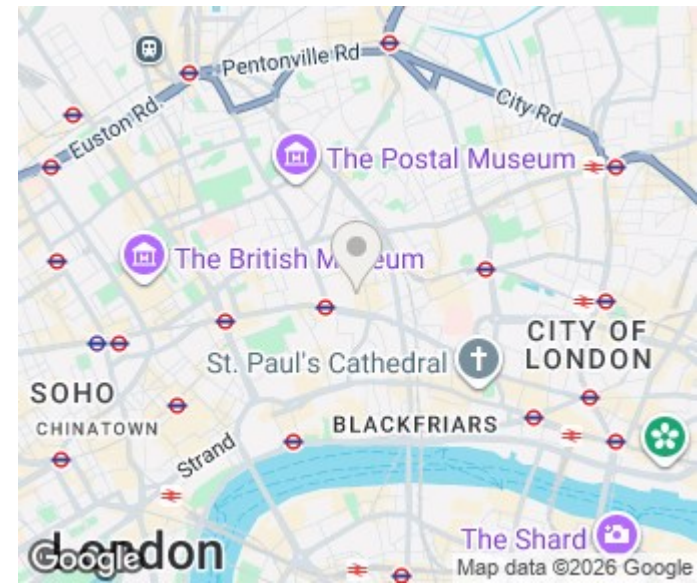
Approx Gross Internal Area = 47.5 sq m / 511 sq ft



Ref

Copyright **BLEU PLAN**

The Floor plan is not to scale and measurements and areas shown are approximate and therefore should be used for illustrative purposes only. The plan has been prepared in accordance with the RICS code of Measuring Practice and whilst we have confidence in the information produced it must not be relied on. If there is any aspect of particular importance, you should carry out or commission your own inspection of the property.  
Copyright © BLEUPLAN



Energy Efficiency Rating		
	Current	Potential
Very energy efficient - lower running costs		
(92 plus) <b>A</b>		
(81-91) <b>B</b>		
(69-80) <b>C</b>		
(55-68) <b>D</b>	65	71
(39-54) <b>E</b>		
(21-38) <b>F</b>		
(1-20) <b>G</b>		
Not energy efficient - higher running costs		
<b>England &amp; Wales</b>	EU Directive 2002/91/EC	

Agents Note: Whilst every care has been taken to prepare these particulars, they are for guidance purposes only. All measurements are approximate and are for general guidance purposes only and whilst every care has been taken to ensure their accuracy, they should not be relied upon and potential buyers/tenants are advised to recheck the measurements

Goldman Greg  
143 Leman Street  
London  
E1 8EY

02079770018  
leads@goldmangreg.co.uk  
www.goldmangreg.co.uk

